

Published March 27, 2020

REQUEST FOR BIDS

PARKING LOT, PARK PATH SEAL COATING and STRIPING

The Mundelein Park and Recreation District hereby requests bids for Parking Lot and Park Path Seal Coating and Striping. Proposals are to be submitted in opaque, sealed envelopes clearly marked BID – Seal Coating/Striping. Bids are due no later than Thursday, May 21, 2020 at 10:00am at the office of the Mundelein Park and Recreation District, 1401 North Midlothian Road, Mundelein, Illinois 60060. All bids will be opened and read aloud at this time. Bids not received by Thursday, May 21, 2020 at 10:00am at the office of the Mundelein Park and Recreation District, 1401 North Midlothian Road, Mundelein, Illinois 60060 will not be considered and will be returned to the bidder unopened.

Bids are to be submitted to the following:

Mundelein Park and Recreation District
Attn: Derek Solberg
1401 N. Midlothian Rd.
Mundelein, IL 60060

The Board of Commissioners of the Mundelein Park and Recreation District reserves the right to reject any or all bids and to waive any technicalities or formalities which it deems to be in the best interest of the district. Bidders must comply with all federal, state, and local laws and regulations including prevailing wage, etc.

All prices are to be F.O.B. Mundelein, Illinois. All work must be performed according to the specifications in a professional manner and be warranted for 24 months from date of acceptance.

Any questions regarding this bid should be directed to Derek Solberg, Superintendent of Buildings and Grounds at 847-388-5463 or dsolberg@mundeleinparks.org. Only inquiries from firms interested in bidding the work will be considered.

A pre-bid meeting will be held on Thursday, May 7, 2020 at 10:00am at the office of the Mundelein Park and Recreation District at 1401 North Midlothian Road, Mundelein, Illinois 60060. Enter the building on the south side near the circle drive and U.S. flag. A site tour will be offered following the meeting.

The contractor must pay the prevailing wage for each trade involved in this project as specified by the State of Illinois Department of Labor.

All Contractors and Subcontractors shall provide the District with a Certificate of Insurance naming the Mundelein Park and Recreation District as additional insured for the contractor's

work on this project. Coverage shall include liability and workmen's compensation. All subcontractors are required to provide same.

The contractor awarded this bid is required to comply with the requirements of the federal and state Drug Free Workplace Acts (41 U.S.C.A. & 701 et seq. and 30 ILCS 580/1 et seq.).

All work must comply to bid specifications or the Village of Mundelein building codes, whichever is stricter.

SCOPE OF WORK

The project shall consist of seal coating park paths and seal coating - striping parking lots, driveways and roads as specified at the following sites: Community Park (Big and Little Preschool parking lot and portion of park roadway), Asbury Park paths, Longmeadow Park – portions of paths, Leathers Park paths, Scott Brown Park parking lot and path, Cardinal Terrace Park paths, Fairhaven Park paths)

QUALIFICATIONS OF CONTRACTORS

Bidding shall be open to all qualified contractors who have completed at least ten (10) similar applications and have been in service a minimum of three (3) years. Bidder may be asked to supply the locations, dates completed, references and materials used.

COMPLETION SCHEDULE

The contractor shall complete these sites on or after Tuesday, June 9th, 2020 and work must be completed by Friday, September 18th, 2020.

- Work at Community Park Big and Little Preschool parking lot must be completed on a Saturday within the range of dates for completion of the work. Work on Saturday, July 4th will not be allowed.
- The Park District reserves right to schedule work at all sites as needed to accommodate usage by District patrons and guests.
- Contractor is required to provide 24 hour notice prior to completing work at any site.

BID DOCUMENTS

All bids must be submitted on the form supplied in the bid documents.

PREVAILING WAGE

All contracts involving labor must adhere to local, state and federal requirements including prevailing wage. All pay requests and invoices must include a copy of the certified payrolls. The information shall include the name, address, telephone number, social security number, classification, wage per hour, number of hours worked each day and starting and ending times of each day for each employee that works on the project. A certified payroll is also required from subcontractors. The certified payroll must contain the records listed above along with a statement signed by the contractor or subcontractor that declares that the records are true, that the hourly rate is not less than required by Public Act 094-0515 and an acknowledgement that filing a false certified payroll is a Class B misdemeanor.

GUARANTEE

The successful bidder shall guarantee the work specified herein against defective materials or faulty workmanship for a period of two (2) years following the date of acceptance by the Park District.

BID/PERFORMANCE GUARANTEE

A Bid Bond in the form of a certified check, bank draft, cashier's check or certified bond, payable to the Mundelein Park and Recreation District, in the amount of 10% of the total bid shall be provided as a guarantee the bidder will enter into a contract with the Park District. A Performance Bond in the form of a certified check, bank draft, cashier's check or certified bond, payable to the Mundelein Park and Recreation District, in the amount of 10% of the total bid is required. Failure on the part of the contractor to complete the work within the specified time or to do the work as specified herein will be considered just cause to forfeit the performance guarantee. Bid Bond will not be accepted as the Performance Bond.

INSURANCE REQUIREMENTS

The successful bidder shall file with the Park District a certificate of insurance in the amount of \$1,000,000 for commercial general liability insurance and, if necessary, commercial umbrella insurance with a limit of not less than \$2,000,000 each occurrence. If such commercial general liability insurance contains a general aggregate limit, it shall apply separately to this project/location. Company shall maintain business auto liability and, if necessary, commercial umbrella liability insurance with a limit of not less than \$1,000,000 each accident. Such insurance shall cover liability arising out of any auto including owned, hired and non-owned autos. The successful bidder shall maintain workers compensation as required by statute and employers liability insurance. The commercial umbrella and/or employers liability limits shall not be less than \$1,000,000 each accident for bodily injury by accident or \$1,000,000 each employee for bodily injury by disease. The Mundelein Park and Recreation District shall be named as additional insured and applicable policy endorsements shall be executed on all policies affecting this contract at no expense to the District. Subcontractors shall meet the same insurance requirements and provide a Certificate of Insurance.

WITHDRAWAL OF BIDS

Bid must be firm for sixty (60) days).

RIGHTS RESERVED BY THE PARK DISTRICT

- The District reserves the right to waive any informality and/or reject any or all bids when, in the opinion of the District, such action serves the best interests of the District. Unless bids are rejected, the contract will be awarded to the lowest responsible, qualified bidder.
- Bidders are responsible for their own measurements and quantities.

PARKING LOT, PARK PATH SEAL COATING SPECIFICATIONS

PREPARATION

- Contractor shall record all pavement markings by photograph or drawing to maintain painting layout following seal coating. Standard parking stall width shall be divided equally. ADA parking stalls shall meet Federal ADA compliance regulations for size and color. Corrections to existing markings may be required and marking layout shall be confirmed with the Superintendent of Buildings and Grounds or his agent.

- Contractor to remove parking stall car stops so that seal coating application is made in their place.
Owner to replace stops when seal coating is complete.
- Clean all asphalt perimeters to extreme edges, removing overgrown grass and debris.
Contractor is responsible for debris removal.

HOT POUR CRACK FILLING

- Surface and hairline cracks less than one quarter (1/4) inch in width do not require repair. Mechanically clean all cracks greater than one quarter (1/4) inch with a wire brush wheel machine or by means of a hot compressed air lance. To assure adhesion, cracks shall be dry and clean of all foreign debris, loose dirt and vegetation prior to applying crack sealant.
- Fill cracks with commercial grade hot-applied sealant material that meets or exceeds the performance of Deery Super Stretch Hot Applied DF Sealant. While crack filler is still hot, it will be struck off with a V-squeegee. Finished sealed cracks and joints will be uniformly level and all “sinkers” will be refilled to achieve one-eighth (1/8) inch concave surface appearance.

**DATA SHEET**

REVISION 3

**DEERY
SUPER STRETCH
HOT APPLIED DF SEALANT**

DESCRIPTION DEERY Super Stretch is a fast curing, premium quality, hot applied single component crack & joint sealant. Our best all around sealant. Only the most appropriate high quality synthetic elastomers, polymers, and anti-oxidants meeting exacting standards are used in combination with select asphalt plasticizers and naturally occurring reinforcing materials. The sealant contains no solvent, is highly waterproof and resistant to a wide range of salts, bases, and organic materials. Super Stretch is tested for low temperature flexibility at -20°F (-29°C).

USE DEERY Super Stretch is an excellent sealant for road, airport and parking area applications for sealing longitudinal and traverse joints and random cracks in Asphalt or Concrete pavements where a fast curing sealant is desirable. The material's superior combination of fast melting, low viscosity and above average high and low temperature properties result in a sealant preferred by many experienced applicators and end users alike. DEERY Pro-PL is recommended for use in extreme high temperature conditions.

HEATING Sealant shall be heated in a DEERY approved direct fire or hot-oil jacketed melter capable of constant mechanical agitation and equipped with a calibrated thermometer to monitor sealant temperature. Material shall be heated to and maintained at the Recommended Application Temperature during use. Material can be cooled and then reheated, but only if prolonged heating is avoided. Prolonged heating at or above Recommended Application Temperature may severely damage product. If overheating damage occurs, immediately drain machine completely and refill with new material.

APPLICATION DEERY Super Stretch is pre-reacted and can be applied immediately after heating to Recommended Application Temperature. With pavement temperature at 40°F (4°C) or higher, place material into clean, dry crack or prepared reservoir by means of a hand-held pot, wheeled push bander or wand applicator. Squeegee any excess sealant tight to pavement surface. Excessive over-banding should be avoided. Pavement may be warmed to 40°F (4°C) or higher with a hot air lance.

PROPERTIES OF DEERY SUPER STRETCH

When sampled and heated to maximum heating temperature in accordance with ASTM D5167

TEST	METHOD	SPECIFICATION
Cone Pen @ 77°F (25°C)	ASTM D5329	75 dmm maximum
Cone Pen @ 122°F (50°C)	ASTM D5329	120 dmm maximum
Flow @ 140°F (60°C)	ASTM D5329	1 mm maximum
Extension @ 77°F (25°C)	DATM**	1000% minimum
Extension @ 0°F (-18°C)	DATM**	500% minimum
Low Temperature Flexibility	DATM**	Pass @ -20°F (-29°C)
Softening Point	ASTM D36	200°F (93°C) minimum
Resilience	ASTM D5329	60% minimum
Bond	ASTM D6690-I Modified	Pass
Asphalt Compatibility	ASTM D5329	Complete
Curing Time	Non-tracking to moving traffic	30 minutes maximum
Weight/Applied Gallon		8 lbs. (3.6 kg) maximum
Recommended Application Temperature	ASTM D5167	380 - 400°F (193 - 204°C) *
Maximum Heating Temperature	ASTM D6690	400°F (204°C)

*Temperature of product measured at pavement surface. Use highest Recommended Application Temperature in cool weather.

*Prolonged heating at or above Recommended Application Temperature may severely damage product. **DEERY American Test Method.

PACKAGING Material is packaged in cardboard boxes sized to accommodate a maximum of 40 lb (18.0 kg). Material contained in each box is wrapped in a quick melt liner which is dissolved and incorporated into the melted product. Standard packaging is 30 lb (13.6 kg) per box, palletized 75 boxes per pallet with an approximate net weight of 2,250 lb (1,021.0 kg). Pallets are moisture protected with a plastic wrapping and bound with a minimum of two layers of UV resistant stretch wrap.

FOR ADDITIONAL INFORMATION

Call: 1-800-227-4059 toll free
Email: info@deeryamerican.com
Web: www.deeryamerican.com

PERFORMANCE Temperature fluctuations, site conditions, surface preparation, traffic, installation technique, material selection, shape factor and surface treatment compatibility influence the effectiveness and useful life of Pavement Preservation treatments. Consider and monitor each element for optimum results. Purchaser and end user should determine applicability for use in their specific conditions.

WARRANTY COMPLETE DETAILS ON REVERSE SIDE OF THIS DATA SHEET

Page 1 of 2

- Thoroughly clean the pavement of all dirt, dust loose debris, and foreign material, using high-speed power blowers, wire brooms, and scrapers.
- Surfaces shall be dry before seal coat application. Sealer shall not be applied when weather is foggy, rainy or when ambient temperature is below 50 degrees Fahrenheit or if temperature is expected to drop below 50 degrees Fahrenheit at any time within a 24 hour period after application.
- All petroleum spills and stains shall be cleaned by scraping or scrubbing with a detergent, then rinse thoroughly with clean water. After cleaning, treat areas with a latex oil spot primer. Bad oil spots will have the oil spot primer worked in with a stiff bristle brush.
- All surfaces shall receive two (2) coats of asphalt or petroleum based emulsion (**no coal tar**), applied at a rate of 0.12 – 0.15 gal per sq. yd. per coat of undiluted material per coat. Ideally, one coat of sealer shall be applied with self-propelled squeegee/ brush equipment and one coat to be spray applied. Self-propelled squeegee/ brush equipment shall have at least two (2) squeegee or brush devices (one behind the other) to assure adequate distribution and penetration of sealer into bituminous pavement. Spray equipment shall be capable of spraying pavement sealer with sand added. Hand squeegees and brushes shall be acceptable where practicality prohibits the use of mechanized equipment. The material used will not be diluted more than 30% with water. A latex modifier will be added to the sealer for extra durability at a minimum of 2% ratio to undiluted sealer. Sand shall be added at a ratio of 4 pounds per gallon of undiluted sealer. To assure material consistency, all materials will be blended in a bulk, agitated, minimum 500 gallon tank. Prior to application, a manufacturers' product sheet may be required to be provided to verify that the product content does not contain asbestos or coal tar products. The Contractor may also be asked to submit certification by the manufacturer that the Contractor has purchased the appropriate quantity of material produced to comply with this specification, and this shall be in the form of a Certificate of Authenticity issued by the coating manufacturer. Quantities of sealer, modifier, and sand may be requested to be verified to the owner prior to application.
- Product used must meet or exceed the performance standards of Gem Seal Pavement Products Black Diamond Pavement Sealer Concentrate.
- All areas must be marked to prevent entry before application has dried.



Technical Data

Black Diamond Pavement Sealer Concentrate

DESCRIPTION:

GemSeal® Black Diamond Concentrate is a premium petroleum-based emulsion pavement sealer, designed for application to pavement surfaces. GemSeal® Black Diamond weatherproofs asphalt surfaces, seals against penetration by water, oil, and blocks the destructive drying action of the sun by forming a tough protective membrane with a deep black color. GemSeal® Black Diamond extends the service life and enhances the appearance to provide a cost effective preventive maintenance coating of asphalt surfaces.

FEATURES:

- Formulated specifically to protect all asphalt surfaces including commercial and residential parking areas and driveways.
- Alternative to both refined tar and asphalt base sealers.
- Weatherproofs and seals porous asphalt surfaces, preventing damaging effects of water penetration.
- Protects pavements from oxidation by forming a tough protective skin with a deep black color.
- Exhibits outstanding wear resistance.
- Manufactured in a regulated continuous process for consistent emulsion particle size and distribution.
- Resists gasoline and oil penetration.

DESCRIPTION:

Property	Max.	Min.
Water (%)	53	48
Non-Volatile (%)	52	47
Ash (%)	39	35
Sp. Gr. @ 77°	1.29	1.19

SPECIFICATIONS:

Meets the following standards listed below:

ASTM D 140 ASTM D 529
ASTM D 466 ASTM D 2939

GemSeal Black Diamond does not contain refined coal tar but does meet the performance standards listed in:

ASTM D 5727 ASTM D3423
ASTM D490 FAA P-625; P-627; and P-630

MIX DESIGNS:

GemSeal® Black Diamond is a concentrate designed to be thoroughly blended with potable water, mineral aggregate and additives in proportions according to the mix designs described in the table below.

MIX DESIGNS (cont.)

GemSeal® Black Diamond	Water	Graded Aggregate ¹	Latex ² Polymer
(GAL)	(GAL)	(LB)	(GAL)
100	30-35	200-300 ⁴	1-2
100	30-40	200-400 ⁴	2-3

*Note: sub-tropical regions may require 10% more water

1. Mineral Aggregate - Introduction of clean, washed, well graded, medium to fine silica or boiler slag mineral aggregate is recommended to provide added traction to the cured coating, in addition to filling hairline voids in the asphalt. 40-70 mesh aggregate size is recommended.
2. Latex Polymer - Field proven in mix designs for best performance with GemSeal® Black Diamond should include the use of GemSeal® Boost Pro, GemSeal® Rapid Set or GemSeal® GuardFlex.
3. Mix designs containing in excess of 40 gal. water per 100 gal. Black Diamond are not recommended, as curing and wear can be affected.
4. USE ONLY GEMSEAL polymer fortifiers specifically designed for Black Diamond. DO NOT USE other additives. Other additives are not chemically compatible with GemSeal® Black Diamond and will degrade the emulsion.

APPLICATION RATE:

0.10-0.15 Gal/Sq.Yd. (per coat)

Pavement Use	Application Rate gal/ sq.yd.	Coats
Low Traffic	.10 - .15	2
Moderate Traffic	.12 - .15	2
High Traffic	.12 - .15	3

Fueling or truck maintenance areas may require an additional lightly sanded coat.

PARKING LOT MARKINGS

- For this project the sites titled Community Park Big and Little Preschool lot (approximately 20 spaces) and Community Park roadway and adjacent parking (approximately 25 spaces) will have re-striping that needs to be completed following seal coating. There are both handicap and standard spaces.

- There will be two crosswalks to re-stripe at Community Park. One near the Sled Hill parking lot and one near the Barefoot Bay path. See photos included in these specifications. The roadway must remain open during this re-striping process.
- Pavement sealer must cure a minimum of twenty-four (24) hours or eight (8) daylight hours prior to applying traffic marking paint. Parking lot and driveway markings shall be placed in existing configurations and locations as confirmed by the Superintendent of Buildings and Grounds or his agent prior to seal coating unless otherwise specified. Paint shall not be applied when air temperatures are below 50 degrees Fahrenheit. All standard parking stall lines shall be yellow in color. Handicap designations to be international symbols using blue paint and white striping. White paint is used for any and all crosswalks and stop lines. All colors of marking paint shall be formulated especially for striping bituminous paving in one coat, free of bleed-through. Use acrylic latex paint over new seal coating. The use of aerosol cans will not be permitted.

SITE TITLE, LOCATIONS, Google Earth images and ESTIMATED SQUARE FOOTAGES

Area square footages (Approximations)

Bidders are responsible for their own measurements and quantities.

All sites are Mundelein, IL 60060

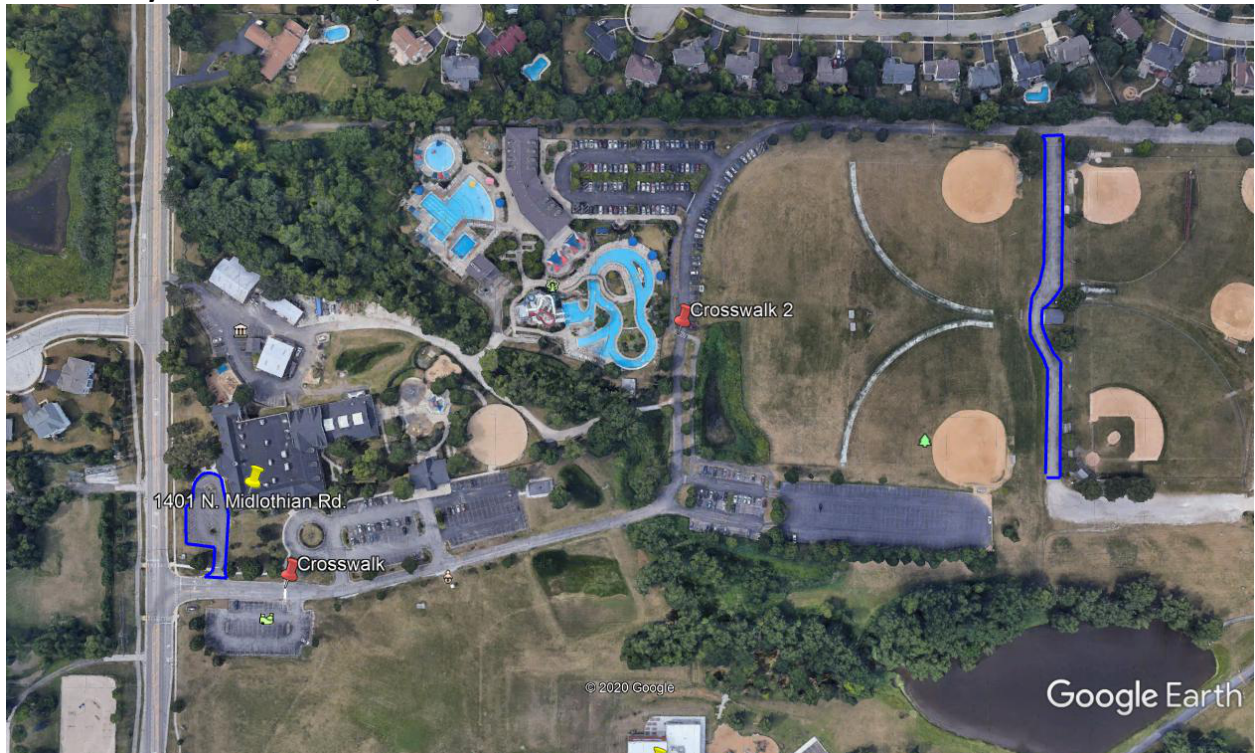
Community Park Big and Little Preschool lot and apron, 1401 N. Midlothian Rd., approximately 10,995 sq. ft.



Community Park roadway and adjacent parking, 1401 N. Midlothian Rd., approximately 17,620 sq ft



Community Park crosswalks, 1401 N. Midlothian Rd.



Asbury Park, 1805 Harrison St., park paths, approximately 35,290 sq ft



Longmeadow Park, Pickford Ct. site, park path, approximately 1,380 sq ft

